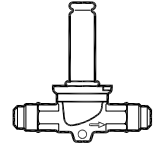
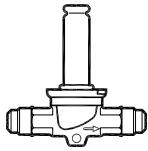


Refrigerants:

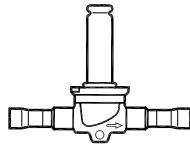
R22/R407C, R404A/R507, R410A, R134a, R407A, R23.



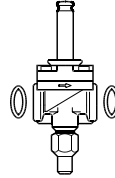
EVR (NC flare)



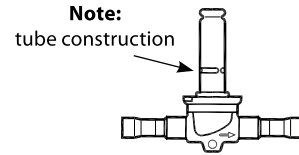
EVR (NC solder)



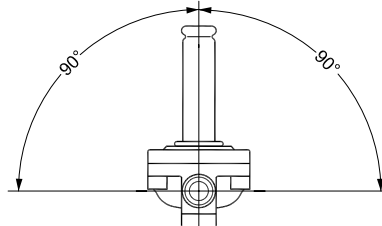
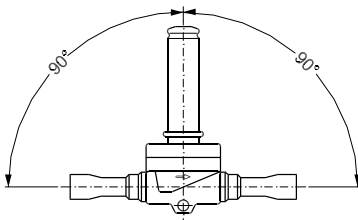
EVR (NC flange)



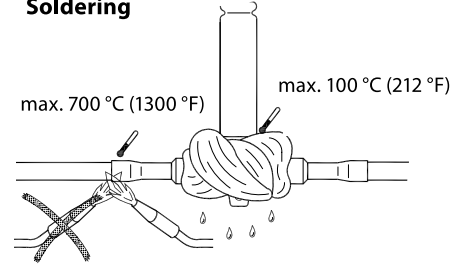
EVR (NO solder)



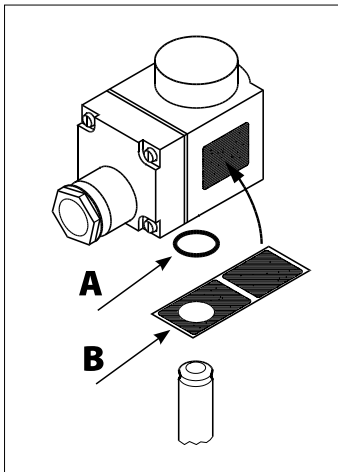
Mounting directions



Soldering



Coil and O-ring



A: Be sure that the O-ring is in place

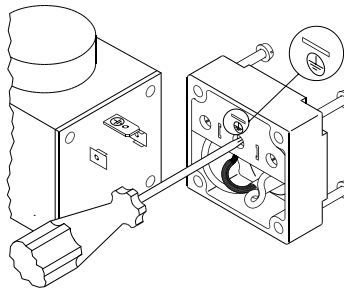
B: Sticker applies only to UL products



Warning

Never switch on power to the coil when the coil is dismantled from the valve. Otherwise the coil may be damaged and there is risk of injuries and burns.

Electrical connections

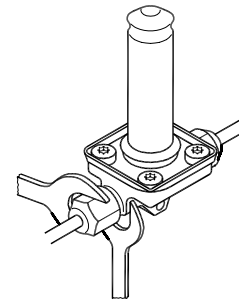


Max. coil temperature	
9 W a.c. (EVR 2)	$t_{max.} = 40\text{ °C (105 °F)}$
10/12 W a.c.	$t_{max.} = 80\text{ °C (175 °F)}$
20 W d.c.	$t_{max.} = 50\text{ °C (120 °F)}$
10 W a.c.	$t_{max.} = 55\text{ °C (130 °F)}$

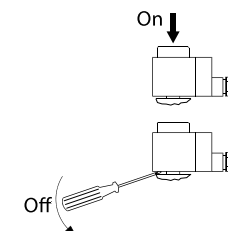
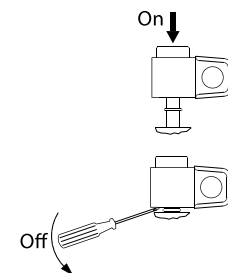
Media temperature	
Min. medium temperature	$t_{min.} = -40\text{ °C (-40 °F)}$
Max. medium temperature	$t_{max.} = 105\text{ °C (221 °F)}$

	EVR 2 - 8	EVR 10 PB	EVR 15 - 22 PB
Max. working pressure PS/MWP	45.2 bar (656 psig)	35 bar (508 psig)	32 bar (464 psig)
Max. operating diff. pressure (MOPD)	UL products – see sticker Non UL – see armature tube		

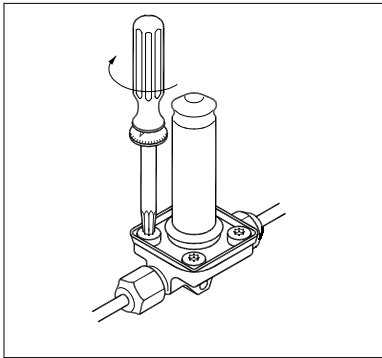
Flare mounting



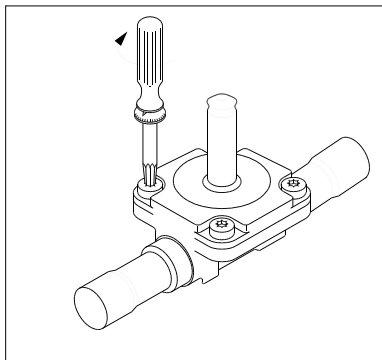
Mounting / dismantling coil



Mounting / dismounting of top part

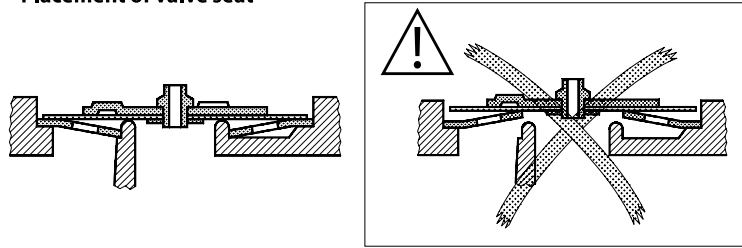


Type	[Nm]	[kpm]	[ft-lbs]	Torx size
EVR 2, EVR 3	1.4	0.15	1	T15
EVR 4, EVR 6, EVR 8	2.0	0.2	1.44	T15/T20

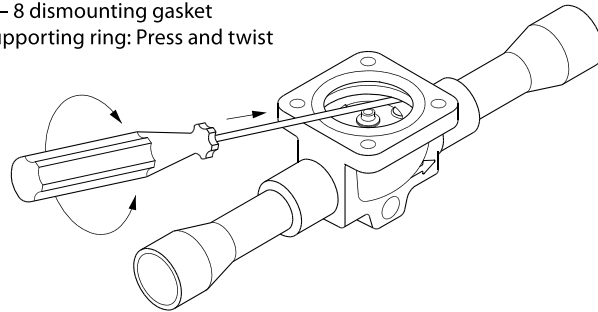


Type	[Nm]	[kpm]	[ft-lbs]	Torx size
EVR 10, EVR 15, EVR 18	2.8	0.3	2	T25
EVR 20, EVR 22	12	1.2	9	T40

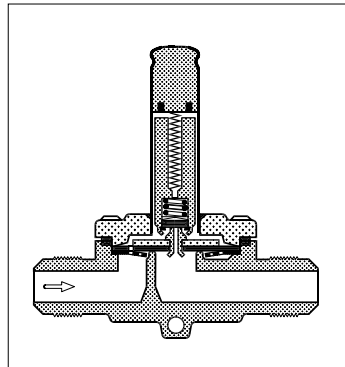
Placement of valve seat



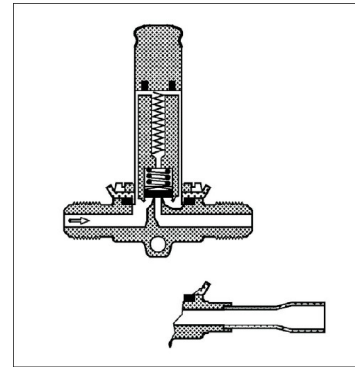
EVR 4 – 8 dismounting gasket and supporting ring: Press and twist



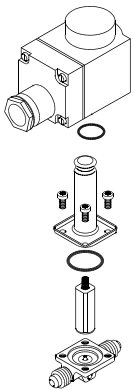
EVR 10 – 22 (NC)



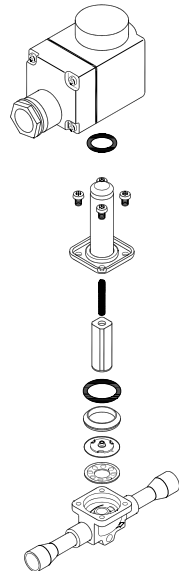
EVR 2 – 8 (NC)



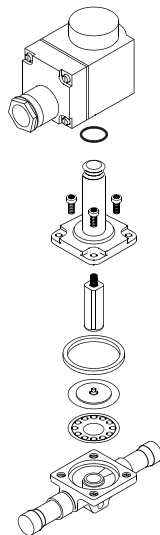
EVR 2 – 3 (NC)



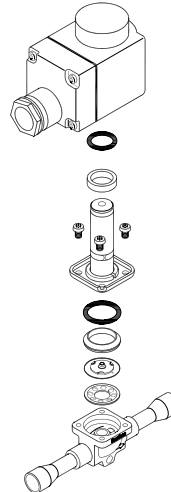
EVR 4 – 8 (NC)



EVR 10 – 22 (NC)



EVR 4 – 8 (NO)



EVR 10 – 20 (NO)

