



CAUTION: This kit should be installed only by qualified personnel. Improper installation can present a hazard.

This kit can be used to convert furnaces from the original White-Rodgers, Norton or Carborundum spiral ignitors to the Robertshaw® Mini Ignitor. Do not use to replace the current production models that use the Low Temp Norton ignitor (025-32626-000).

Find the proper application (1, 2, 3, 4 or 5) on this instruction sheet that corresponds to the model of furnace to be converted. Refer to the line art in each section along with Table 1 for the appropriate mounting bracket and other parts required for the conversion. Select only those parts and discard the rest.



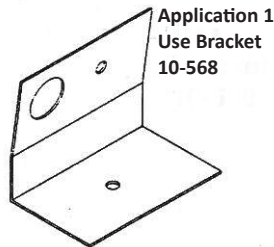
CAUTION: Hot surface ignitors get hot! Up to 2500°F. Therefore wait several minutes allowing the ignitor to cool down, before attempting any service work. Failure to do so will cause severe personal injury.

FURNACE APPLICATION 1: Instructions for 78% AFUE

Upflow / Downflow

Models: P (1,2) UC, P (A,B) MU, P (1,2) CC, P (A,B) MD

1. Turn off all gas and electric supply to the equipment being serviced.
2. Remove the burner compartment access door.
3. Disconnect the wiring from the hot surface ignitor at the plug connection.



4. Locate the burner cover behind the gas valve.
5. Carefully remove the old bracket and ignitor saving the screw for reassembly.
6. Attach the new ignitor to the new bracket (10-568) with the hex head screw provided (30-123).
7. Carefully install the new bracket and ignitor.
8. Secure the new ignitor bracket to the burner cover with the saved screw from the disassembly of the original bracket.
9. The metal shield of the ignitor should touch the burner carryover tube.

10. Reconnect the ignitor.
11. Restore the gas and electric supply to the unit.
12. Set room thermostat for heat and cycle the system.
13. Replace burner compartment access door.

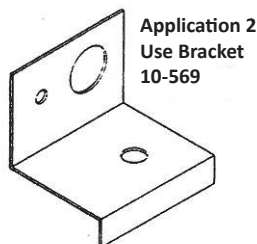
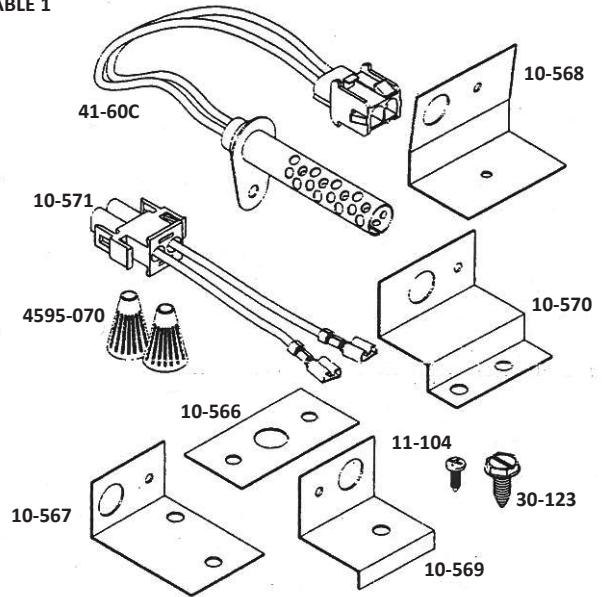


TABLE 1



41-605 Mini Ignitor Conversion Kit

Component	Description	Component	Description
41-60C	Hot Surface Ignitor	10-571	Electric Harness
10-566	Ignitor Bracket	11-104	Sheet Metal Screw
10-567	Ignitor Bracket	30-123	Screw Hex Head
10-568	Ignitor Bracket	4595-070	Wire Connectors
10-569	Ignitor Bracket	1-970	Instruction sheet
10-570	Ignitor Bracket		

FURNACE APPLICATION 2: Instructions for 78% AFUE

Upflow / Downflow

Models: P (3,9) UC, P (C,K) MU, P (3,9) CC, P (C,K) MD, XEU, XED

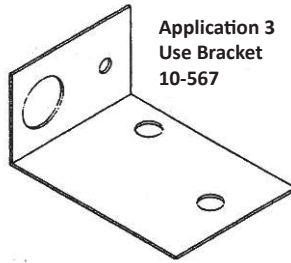
1. Turn off all gas and electric supply to the equipment being serviced.
2. Remove the burner compartment access door.
3. Remove the burner box cover and save the screws for re-assembly.
4. Disconnect the wiring from the hot surface ignitor at the plug connection.
5. Carefully remove the old bracket and ignitor saving the screw for reassembly.
6. Attach the new ignitor to the new bracket (10-569) with the hex head screw provided (30-123).
7. Carefully install the new bracket and ignitor.
8. The metal shield of the ignitor should touch the ribbon portion of the burner.
9. Reconnect the ignitor.
10. Replace the burner box cover.
11. Restore the gas and electrical supply to the unit.
12. Set room thermostat for heat and cycle the system.
13. Replace burner compartment access door.

FURNACE APPLICATION 3:

Instructions for 90% AFUE, Upflow

Models: P (1,2,9) UD, P (A,B,K) NU, XNU

1. Turn off all gas and electric supply to the equipment being serviced.
2. Remove the burner compartment access door.
3. Remove burner box cover and save the screws for re-assembly.
4. Disconnect the wiring from the hot surface ignitor at the plug connection.
5. Carefully remove the old bracket and ignitor saving the screw for re-assembly.
6. If both holes are not present on the furnace panel to accept the new bracket, drill a 5/32" hole using the new ignitor bracket for alignment.
7. Attach the new ignitor to the new bracket (10-567) with the hex head screw provided (30-123).
8. Carefully install the new bracket and ignitor using the screws saved from the old bracket removal.
9. The clearance between the metal shield of the ignitor and the carryover tube should be between 0" and 1/8".
10. Reconnect the ignitor.
11. Replace the burner box cover.
12. Restore the gas and electrical supply to the unit.
13. Set room thermostat for heat and cycle the system.
14. Replace burner compartment access door.



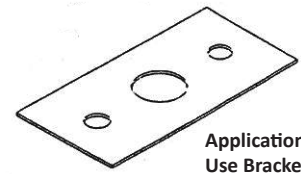
7. Attach the new ignitor to the new bracket (10-570) with the hex head screw provided (30-123).
8. Carefully install the new bracket and ignitor using the screws from the old bracket.
9. The clearance between the metal shield of the ignitor and the carry over tube should be between 0" and 1/8".
10. Reconnect the ignitor.
11. Reinstall the burner box cover.
12. Restore the gas and electrical supply to the unit.
13. Set room thermostat for heat and cycle the system.
14. Replace burner compartment access door.

FURNACE APPLICATION 5:

Instructions for 90% AFUE, Upflow

Models: P2UR, PBLU, DGU Style A

1. Turn off all gas and electric supply to the equipment being serviced.
2. Remove the burner compartment access door.
3. Remove burner box cover and save the screws for re-assembly.
4. Disconnect the wiring from the hot surface ignitor at the plug connection.
5. Carefully remove the old bracket and ignitor saving the screws and gasket for re-assembly.
6. Carefully install the new bracket (10-566) and ignitor on the burner box with the saved screws making sure that the gasket is between the burner box and the new ignitor bracket.
7. The clearance between the metal shield of the ignitor and the burner should be between 0" and 1/8".
8. Reconnect the ignitor.
9. Reinstall the burner box cover.
10. Restore the gas and electrical supply to the unit.
11. Set room thermostat for heat and cycle the system.
12. Replace burner compartment access door.

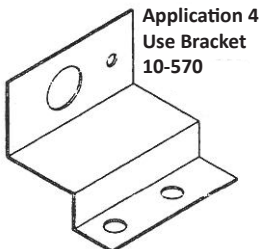


FURNACE APPLICATION 4:

Instructions for 90% AFUE, Downflow

Models: P (1,2) CD, P (A,B) XND

1. Turn off all gas and electric supply to the equipment being serviced.
2. Remove the burner compartment access door.
3. Remove burner box cover and save the screws for re-assembly.
4. Disconnect the wiring from the hot surface ignitor at the plug connection.
5. Carefully remove the old bracket and ignitor saving the screw for re-assembly.
6. If both holes are not present on the furnace panel to accept the new bracket, level the new mounting bracket horizontally and drill a 7/64" hole.



191 E. North Avenue
Carol Stream Illinois 60188 USA
Customer Service Telephone 1.800.304.6563
Customer Service Facsimile 1.800.426.0804
HVACCustomerService@robertshaw.com

For Technical Service
Telephone 1.800.445.8299
Facsimile 1.630.260.7294
TechnicalService@robertshaw.com

Robertshaw®, Ranco®, Paragon® and Uni-Line® are trademarks of Robertshaw its subsidiaries and/or affiliated companies. All other brands mentioned may be the trademarks of their respective owners.

www.uni-line.com
www.robertshaw.com
©2014 Robertshaw
07/14 – 1-970 Rev C