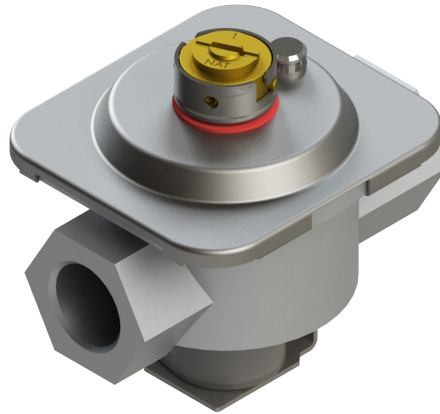


GPR Series

Master Gas Regulator



Description

The Robertshaw® GPR Series Master Gas Regulator significantly reduces methane emissions from gas ranges by stopping gas flow entirely when the appliance is off. Unlike current systems with potential leaks at multiple connection points, the Master Regulator's electronic shutoff at the inlet minimizes leakage to less than 20 cc/hr, far below industry standards and dramatically reducing environmental impact. This innovative solution also enhances safety by preventing leaks from loose connections within the appliance.

Features and Benefits

- Meets Redundancy Requirements
- One Shutoff Source to Cooktop & Oven
- Shutoff Occurs at Appliance Inlet
- Allows for Appliance Lockout Control
- Lockout Peace of Mind for Parents & Pet Owners

Specifications

- Regulation range of 150 BTU up to 180,000 BTU/HR
- Rated capacity: 180,000 BTU/HR at 1" pressure drop
- Rated outlet pressures: 4", 5" or 6" W.C. Natural Gas 10" and 11" W.C. LP gas
- Straight-through design
- Die-cast aluminum housing
- Rated maximum inlet pressure 0.5 PSI
- Inlet and outlet options up to 3/4" NPT
- Agency Certifications:
 - CSA 164114-1763594 (4670)
 - CSA 164114-1763603 (4680)



Customer Service
+1 800 304 6563
HVACCustomerService
@robertshaw.com

Technical Service
+1 800 445 8299
TechnicalService
@robertshaw.com

www.robertshaw.com
©2025 Robertshaw
01/25 150-2961

Application Diagram

Gas delivery system with Master Gas Regulator.

