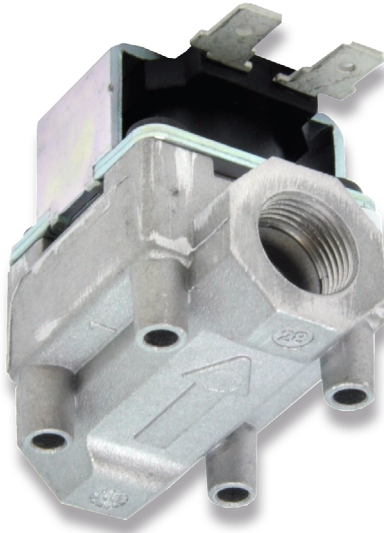


# Solenoid Gas Valves

SGV Series

**Robertshaw**  
RANCO • PARAGON • CASTFUTURA



## Description

The Robertshaw® SCV Series valve has a rugged design which exceeds current qualifications. Its function is to control the flow of gas in an appliance application. Die cast aluminum bodies with multi-position, rigid mounting and standard brackets are available. This gas solenoid valve can be used for a wide variety of applications, especially in ovens and griddles.

## Features and Benefits

- Normally closed solenoid
- Compact size with high flow rates
- Standard NEMA terminals
- Inlet filtered screen
- Various gas types: natural, manufactured, mixed, LP, and LP/air mixtures
- Multiple terminal and mounting brackets and bracket configurations available
- RoHS compliant

## Specifications

- Ambient temperature: -40°F to 300°F (-40°C to 149°C) maximum
- Capacity up to 30,000 BTU at 1" WC pressure drop
- 24 VAC, 50/60 Hz, 0.56 Amp
- 120 VAC, 50/60 Hz, 0.13 Amp
- Single or Dual SGV with 10V DC, 48 mA coil(s)
- Dual SGV with 3.6 V DC solenoids
- Maximum pressure: 0.5 PSI
- Agency Certification Numbers:
  - CSA Certification 164327-1177530
  - EN Certification CE 2797



**Customer Service**  
+1 800 304 6563  
HVACCustomerService  
@robertshaw.com

**Technical Service**  
+1 800 445 8299  
TechnicalService  
@robertshaw.com

**www.robertshaw.com**  
©2024 Robertshaw  
07/25 150-2371 RevD

# Product Dimensions

Dimensions are inches and [millimeters].

