

TUBES AND FITTINGS SERIES

The Robertshaw® Tubes and Fittings Series are manufactured for a wide variety of industry standard end forms as well as the patented UTS Double Bead and High Temperature Flare. Tube assemblies and components offer an efficient alternative to standard compression fittings.

Features and Benefits

- More efficient, lower cost assembly
- Reduced number of inventoried parts
- Double Bead and High Temperature Flare are a formed part of the tube to assure proper assembly
- Reassemble repeatedly
- No danger of cut tubes due to over-tightening or misalignment of compression sleeves
- Reliable gas-tight connection



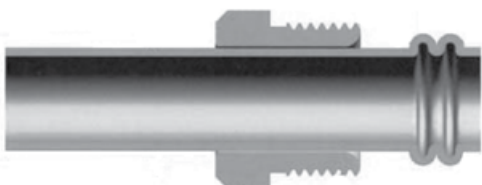
Specifications

Outside Diameter	Double Bead	Single Flare	Double Flare
3/16"	Yes	No	No
1/4"	Yes	Yes	No
5/16"	Yes	Yes	Yes
3/8"	Yes	Yes	Yes
7/16"	Yes	Yes	No
1/2"	Yes	Yes	No
5/8"	No	Yes	No

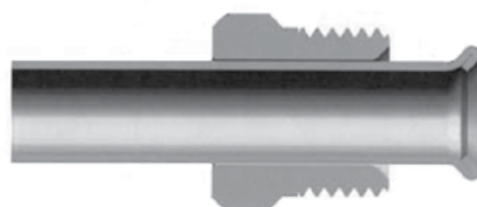
TUBES AND FITTINGS SERIES

PRODUCT DRAWINGS

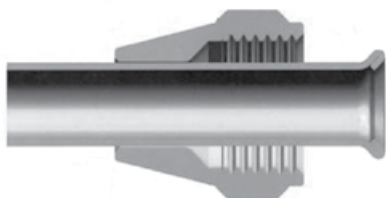
UTS Double Bead (Male Nut)



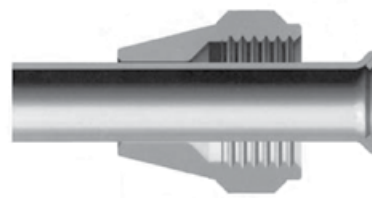
Inverted Flare



SAE 45" Flare



SAE 45" Double Flare



UTS High Temperature Flare



UTS Double Bead (Female Nut)

