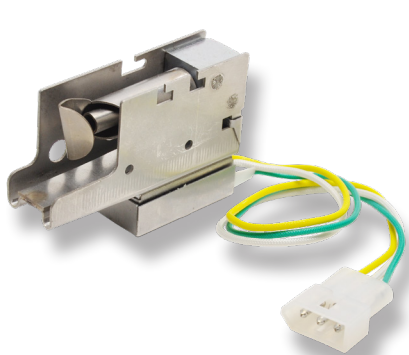
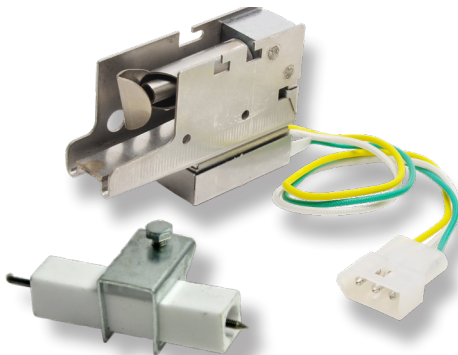


1830 Series

Electronic Pilot Burner with Safety Switch



1830-620



1830-620K

1 Year
Limited
Warranty



Customer Service
+1 800 304 6563
HVACCustomerService
@robertshaw.com

Technical Service
+1 800 445 8299
TechnicalService
@robertshaw.com

www.robertshaw.com
©2024 Robertshaw
10/24 150-2698 Rev D

Description

The Robertshaw® 1830 Series Pilot Burner Safety Switch is an ignition control with an embedded safety switch. The control's sensing technology automatically detects when a flame is not present and shuts off gas flow to help prevent an unsafe condition. Key replacement component for over 1,700 Carrier, Payne, Bryant and Daynight (BPD) furnace models.

Features and Benefits

- Differential expansion pilot with a 3-lead SPDT switch for use with a hot surface ignitor or spark ignition
- Yellow, white and green wires with Molex plug adaptor
- Pilot includes flame sensing, heat activated relay at base of pilot module
- 1830-620K: Kit comes complete with Robertshaw 10-680 electrode assembly
- Robertshaw is the only vendor offering a CSA approved control

Applications

- Key replacement component for over 1,700 Carrier, Payne, Bryant and Daynight (BPD) furnace models

Specifications

Part Numbers	Description	Switch	Orifice Size	Inlet Pressure	Input Rating	Dimensions	Electrical Rating
1830-620	Pilot Burner Safety Switch	SPDT	.017	7.0" W.C.	950 BTU/Hr	4.7"L x 3"W x .7"H	30V AC, 60 Hz, 1 Amp
1830-620K	Pilot Burner Safety Switch with 10-680 Electrode Assembly	SPDT	.017	7.0" W.C.	950 BTU/Hr	4.7"L x 3"W x .7"H	30V AC, 60 Hz, 1 Amp

Replacement and Cross Reference

Part Numbers	Replaces	Replaces OEM Parts (CSA Required)			Supco	White-Rodgers
1830-620	Carrier Pilot	535-740A	535-740	CARL38999	NA	NA
1830-620K	Carrier Pilot Kit with Electrode Assembly All-in-One	535-740A	P671-1406	CARL1830620	FLS0005 (No CSA)	791P-751KT1
10-680	Electrode Assembly	LH680005	LH680512	LH33JZ053	NA	NA